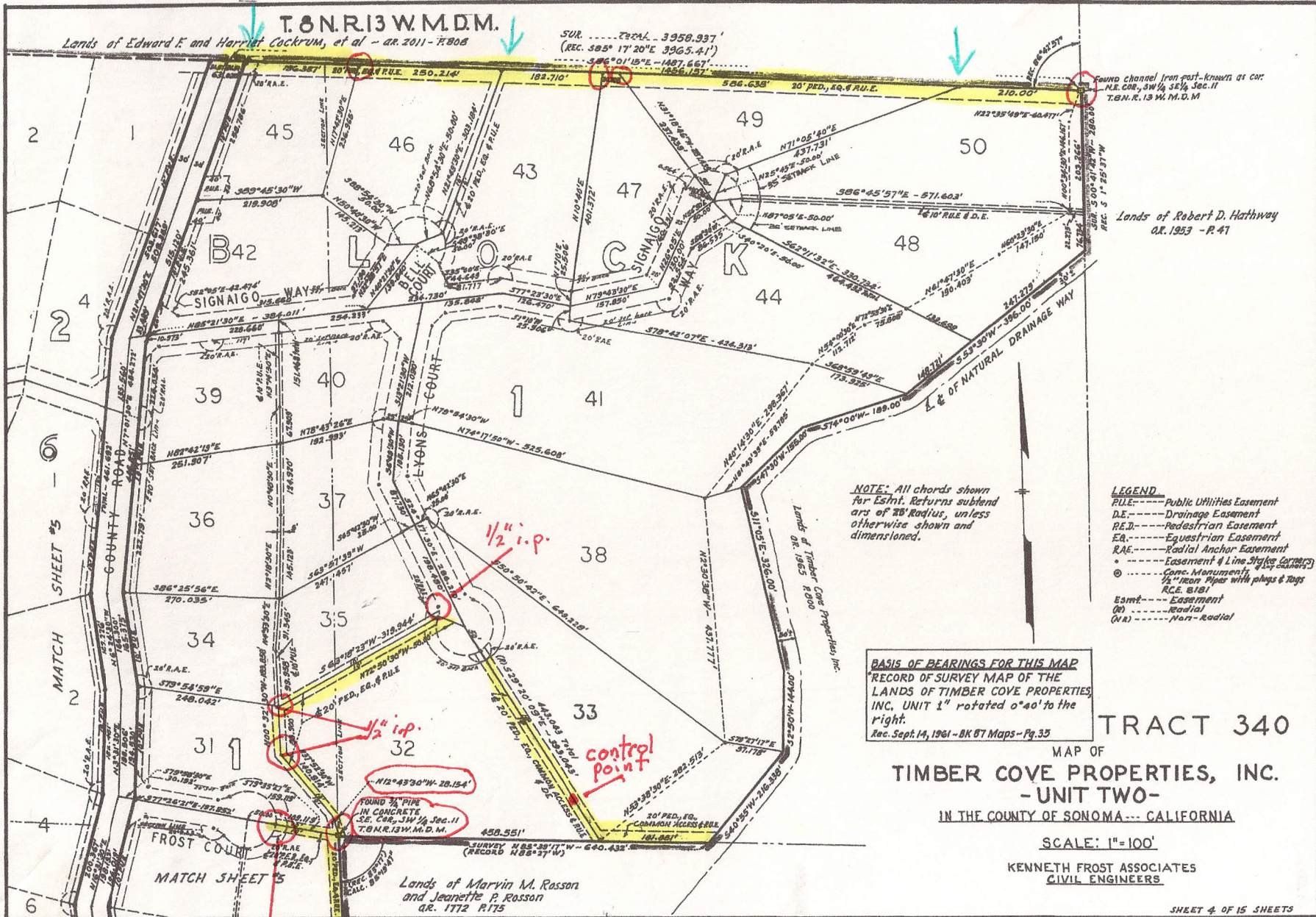


103
14

244



Map Case 2-1990

AMENDED By Book 113 Page 20
(MAP CASE 2879)

103
15

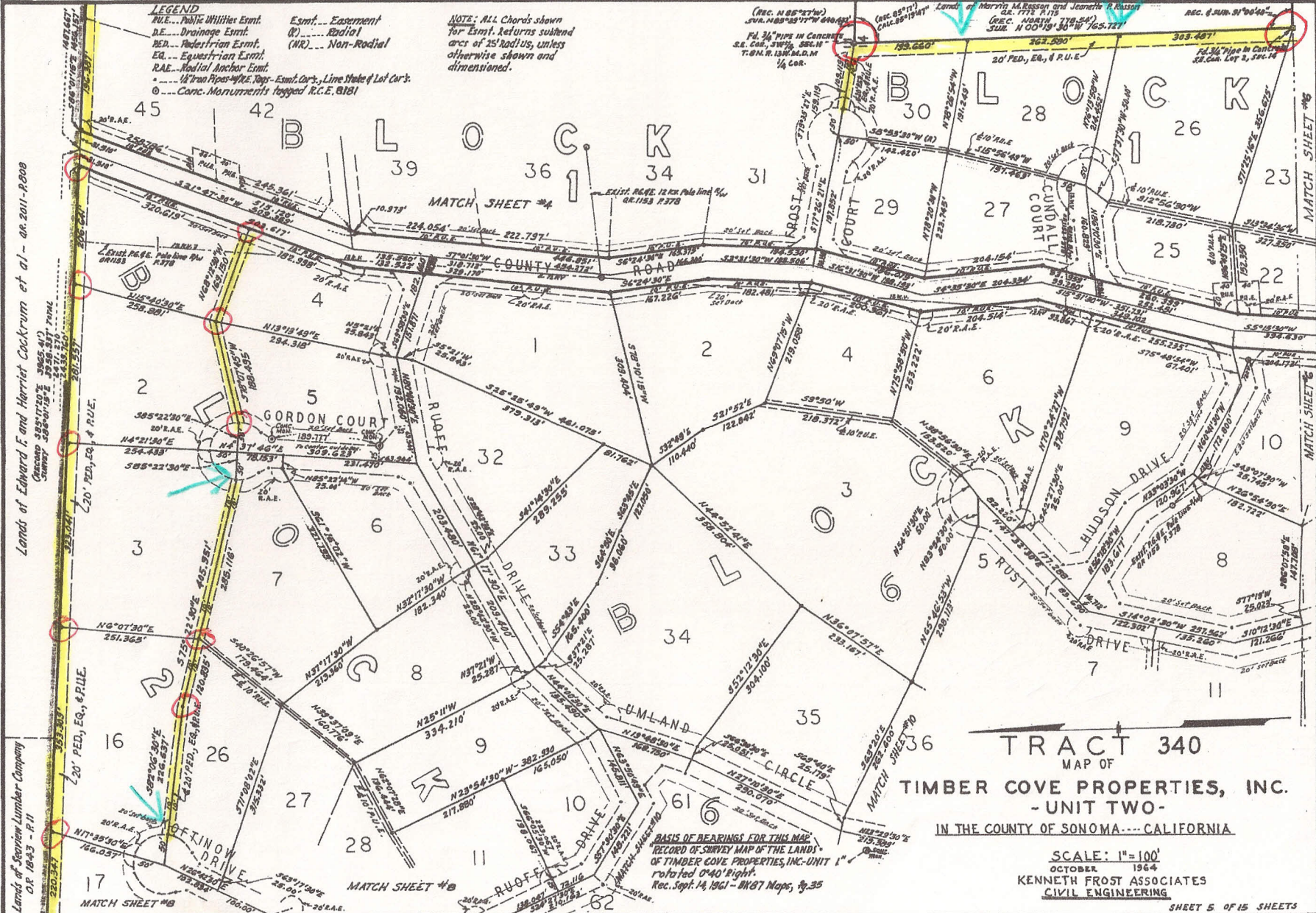
2484

LEGEND
 P.U.E. ... Public Utilities Esm't.
 D.E. ... Drainage Esm't.
 R.E. ... Radial Esm't.
 E.A. ... Easement Esm't.
 R.A.E. ... Radial Anchor Esm't.
 T.P.P. ... 1/2" Iron Pipes w/ R.F. Taps - Esm't. Curb, Line Stake & Lot Ck.
 C.M. ... Conc. Monuments tagged R.C.E. 0181

Esm't. ... Easement
 (R) ... Radial
 (NR) ... Non-Radial

NOTE: ALL Chords shown for Esm't. returns subtend arcs of 25' radius, unless otherwise shown and dimensioned.

(REC. N 85° 23' 10" W SUR. N 108° 45' 17" W 600.00')
 PL 34 PIPE IN CENTER S.E. COR. TWP. 35S, R. 12E, T. 35N. R. 12E. M.D.M. 1/4 COR.
 (REC. 05° 17' 10" W SUR. N 00° 19' 30" W 765.77')
 Land of Morris M. Besson and Jeanette P. Besson
 DE. 773 P. 119
 (REC. N 04° 15' 10" W SUR. N 00° 19' 30" W 765.77')



TRACT 340

MAP OF
TIMBER COVE PROPERTIES, INC.
 - UNIT TWO -
 IN THE COUNTY OF SONOMA - CALIFORNIA

SCALE: 1" = 100'
 OCTOBER 1964
 KENNETH FROST ASSOCIATES
 CIVIL ENGINEERING

SHEET 5 OF 15 SHEETS

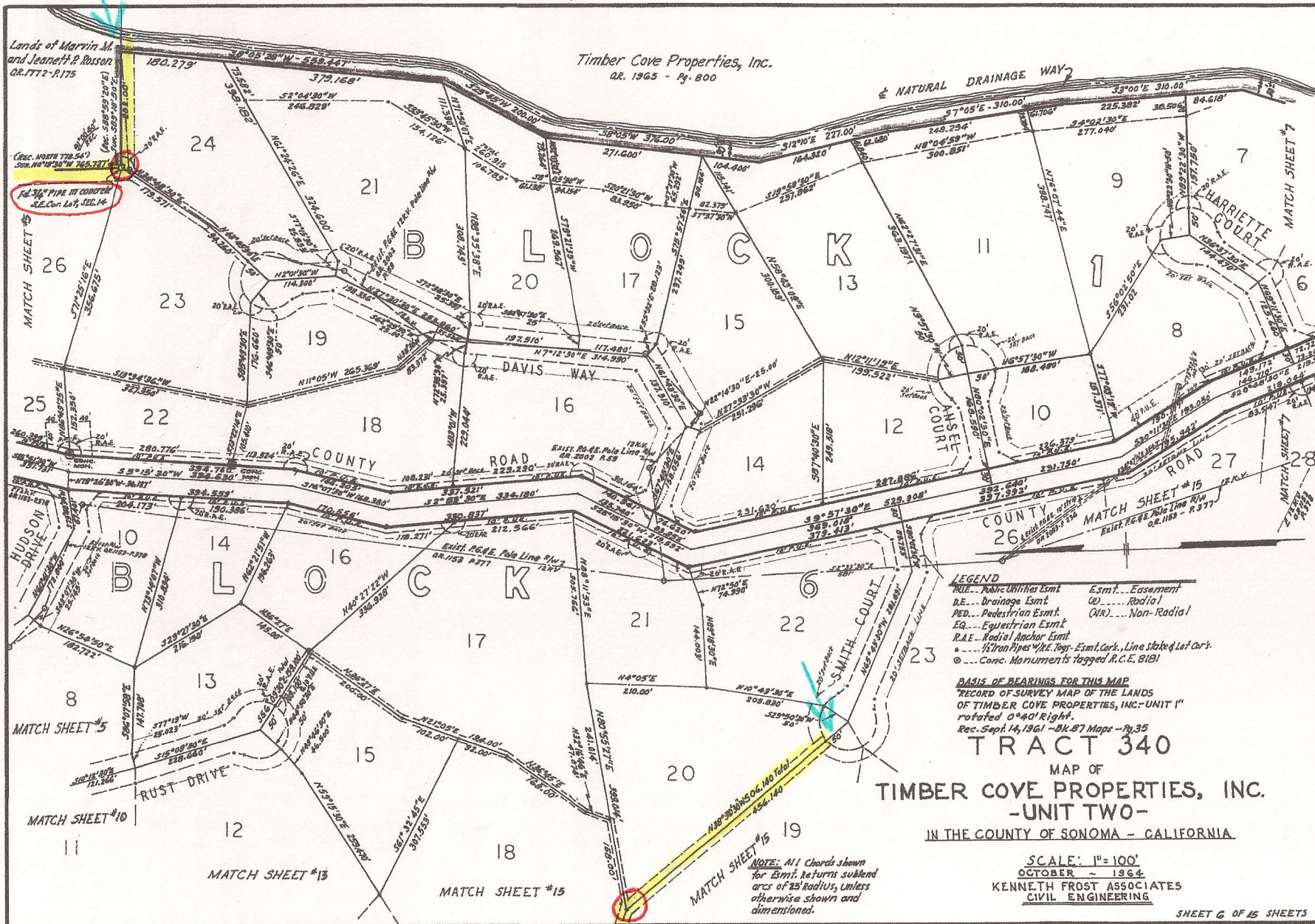
Lands of Edward F. and Harriet Cockrum et al - ac. 2011-18008

Lands of Stephen Lumber Company
 O.P. 1843 - P. 11

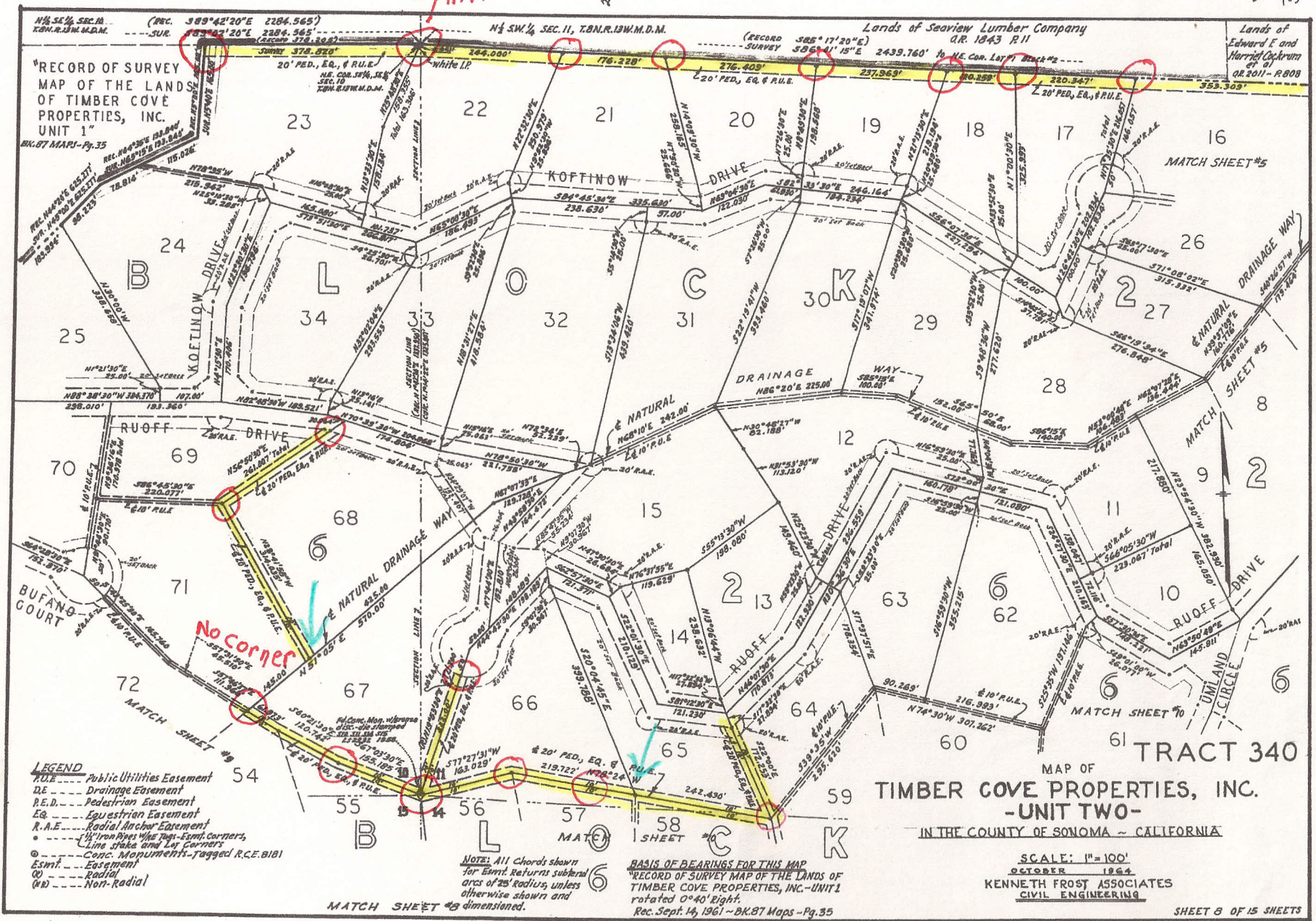
My
 Case
 A-484

AMENDED By Book 113 PALERO
 (MAP CASE 2879)

103
16



Map
C
2-484



my case 2454

Aug 1 Team 1

2484

103

103

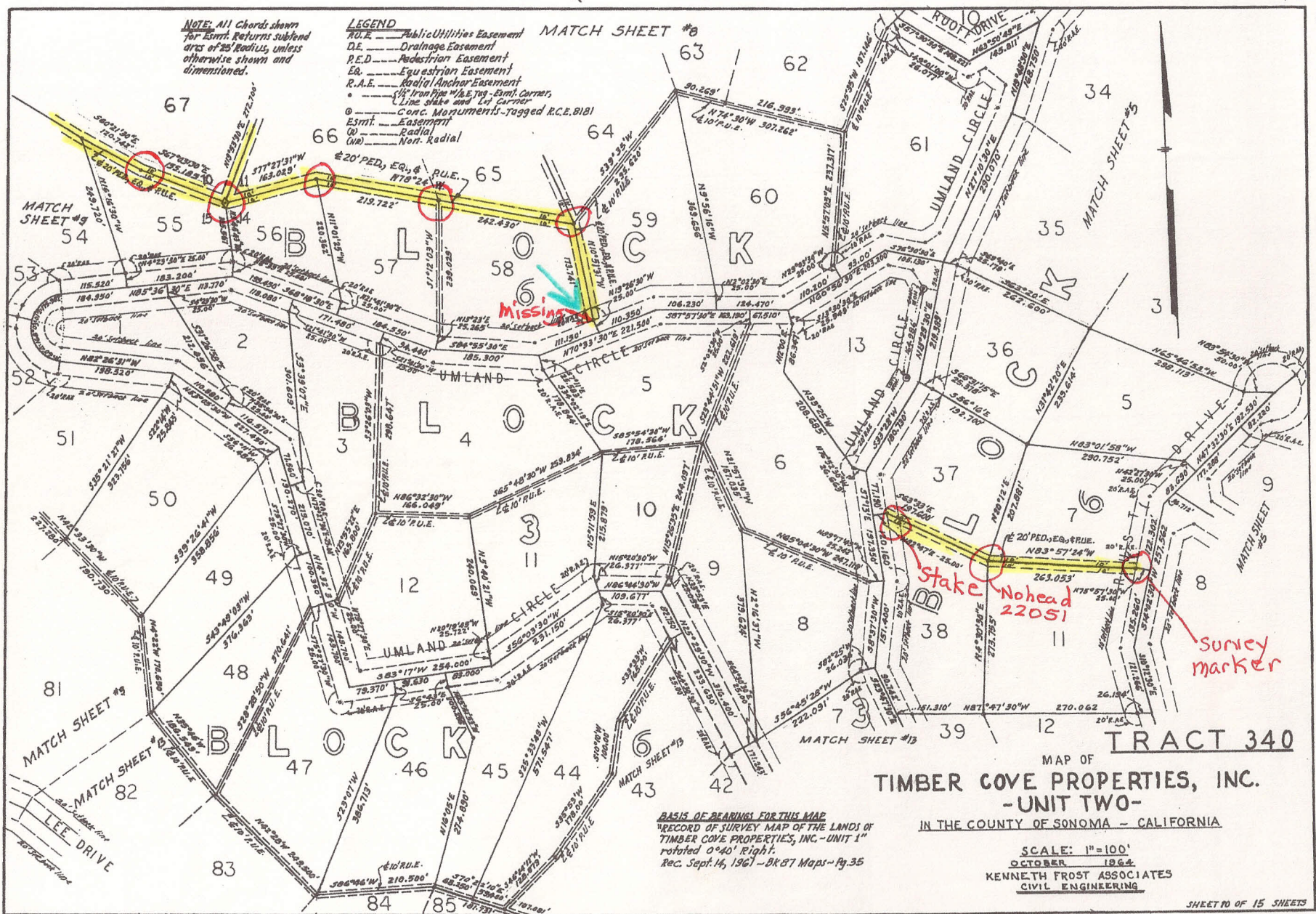
20

NOTE: All Chords shown for Esmt. Returns subfund arcs of 20' Radii, unless otherwise shown and dimensioned.

LEGEND

- P.U.E. — Public Utilities Easement
- D.E. — Drainage Easement
- P.E.D. — Pedestrian Easement
- E.E. — Equestrian Easement
- R.A.E. — Radial Anchor Easement
- Iron Pipe W/A.E. 70' Esmt. Corners
- Line stake and 2' Corner
- C.C.P. Monument - tagged R.C.E. 8181
- Esmt. — Easement
- (R) — Radial
- (NR) — Non-Radial

MATCH SHEET #8



MAP OF
TIMBER COVE PROPERTIES, INC.
 - UNIT TWO -
 IN THE COUNTY OF SONOMA - CALIFORNIA

BASIS OF BEARINGS FOR THIS MAP
 RECORD OF SURVEY MAP OF THE LANDS OF
 TIMBER COVE PROPERTIES, INC. - UNIT 1"
 rotated 0°40' Right.
 Rec. Sept. 14, 1967 - BK 87 Maps - Pg. 35

SCALE: 1"=100'
 OCTOBER 1964
 KENNETH FROST ASSOCIATES
 CIVIL ENGINEERING

SHEET 10 OF 15 SHEETS

map
Chc
2484

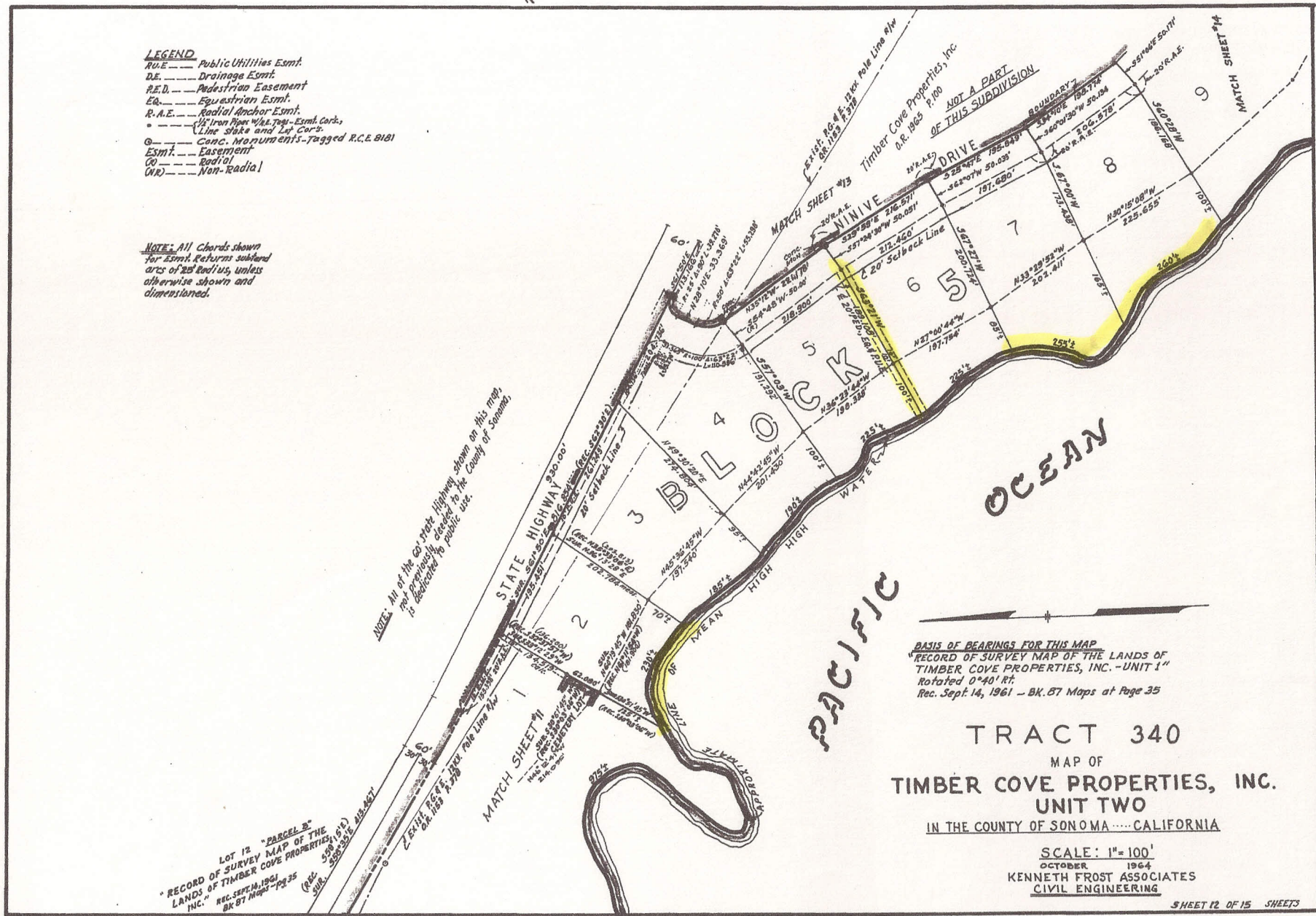
LEGEND

- P.U.E. --- Public Utilities Esmt.
- D.E. --- Drainage Esmt.
- P.E. --- Pedestrian Esmt.
- E.A. --- Equestrian Esmt.
- R.A.E. --- Radial Anchor Esmt.
- --- Iron Pipe W/L Tap Esmt. Cork.
- --- Line Stake and Lot Cor.
- ⊙ --- Conc. Monument's-tagged R.C.E. 8101
- Esmt. --- Easement
- ⊖ --- Radial
- ⊖ --- Non-Radial

NOTE: All Chords shown for Esmt. Returns subland arcs of 25' radius, unless otherwise shown and dimensioned.

NOTE: All of the east front Highway shown on this map, and any easements located to the County of Sonoma, is dedicated to public use.

LOT 12 "PARCEL B"
 "RECORD OF SURVEY MAP OF THE
 LANDS OF TIMBER COVE PROPERTIES,
 INC." REC. SEPT. 14, 1961
 BK 87 Maps - PG 35
 (Cont. Sub.)
 589' 15" 110° 35' 35"



BASIS OF BEARINGS FOR THIS MAP
 "RECORD OF SURVEY MAP OF THE LANDS OF
 TIMBER COVE PROPERTIES, INC. - UNIT 1"
 Rotated 0°40' RT.
 Rec. Sept. 14, 1961 - BK. 87 Maps at Page 35

TRACT 340
 MAP OF
TIMBER COVE PROPERTIES, INC.
UNIT TWO
 IN THE COUNTY OF SONOMA CALIFORNIA

SCALE: 1"=100'
 OCTOBER 1964
KENNETH FROST ASSOCIATES
 CIVIL ENGINEERING

SHEET 12 OF 15 SHEETS

2484

103

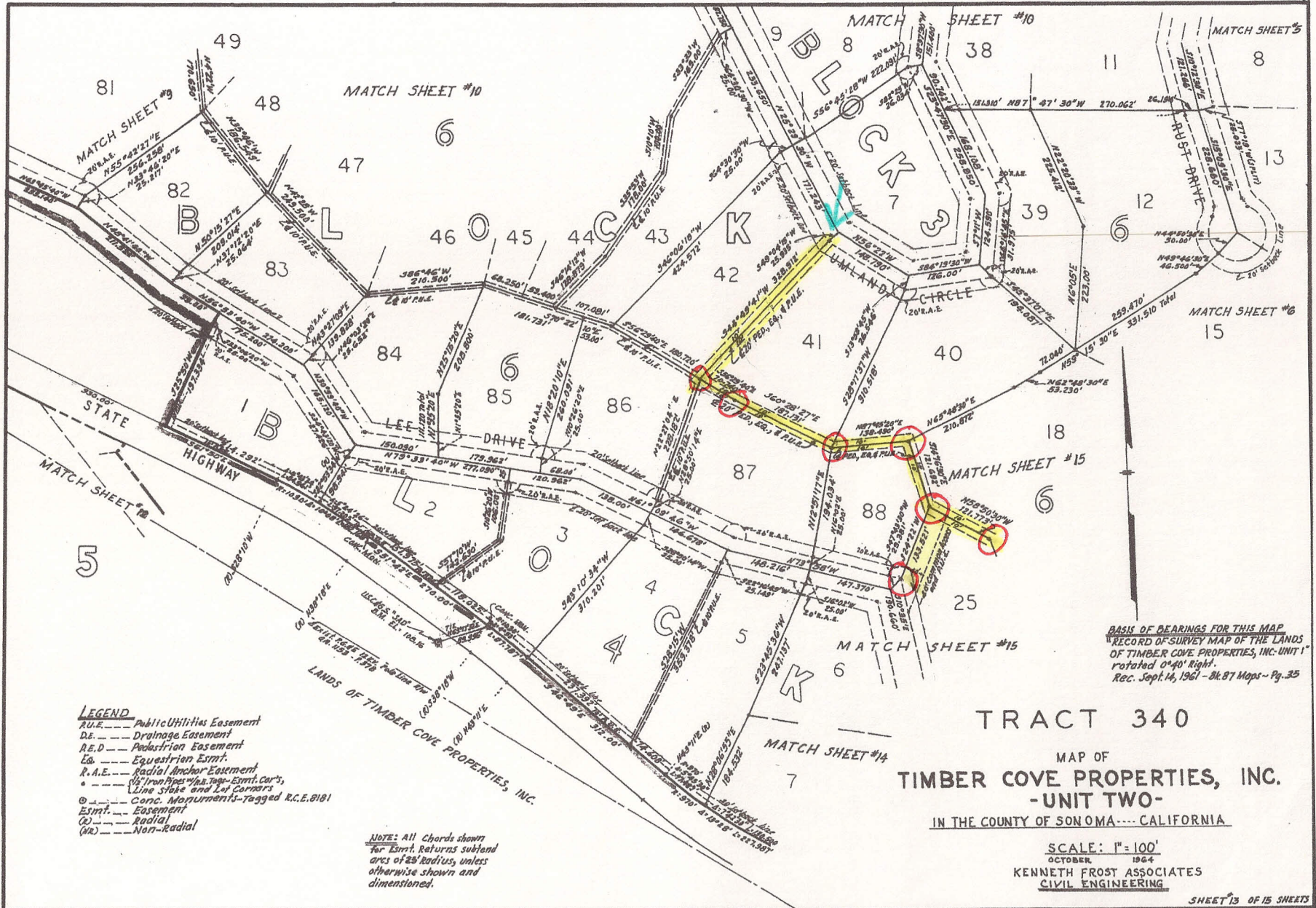
22

Handwritten notes: 2484

2484

103

23



- LEGEND**
- Public Utilities Easement
 - A.U.E. --- Drainage Easement
 - D.E. --- Pedestrian Easement
 - P.E. --- Equestrian Easmt.
 - E. --- Radial Anchor Easement
 - R.A.E. --- Conc. Measurements - Tagged R.C.E. 0101
 - Line Stake and Lot Corners
 - Easement
 - (R) --- Radial
 - (NR) --- Non-Radial

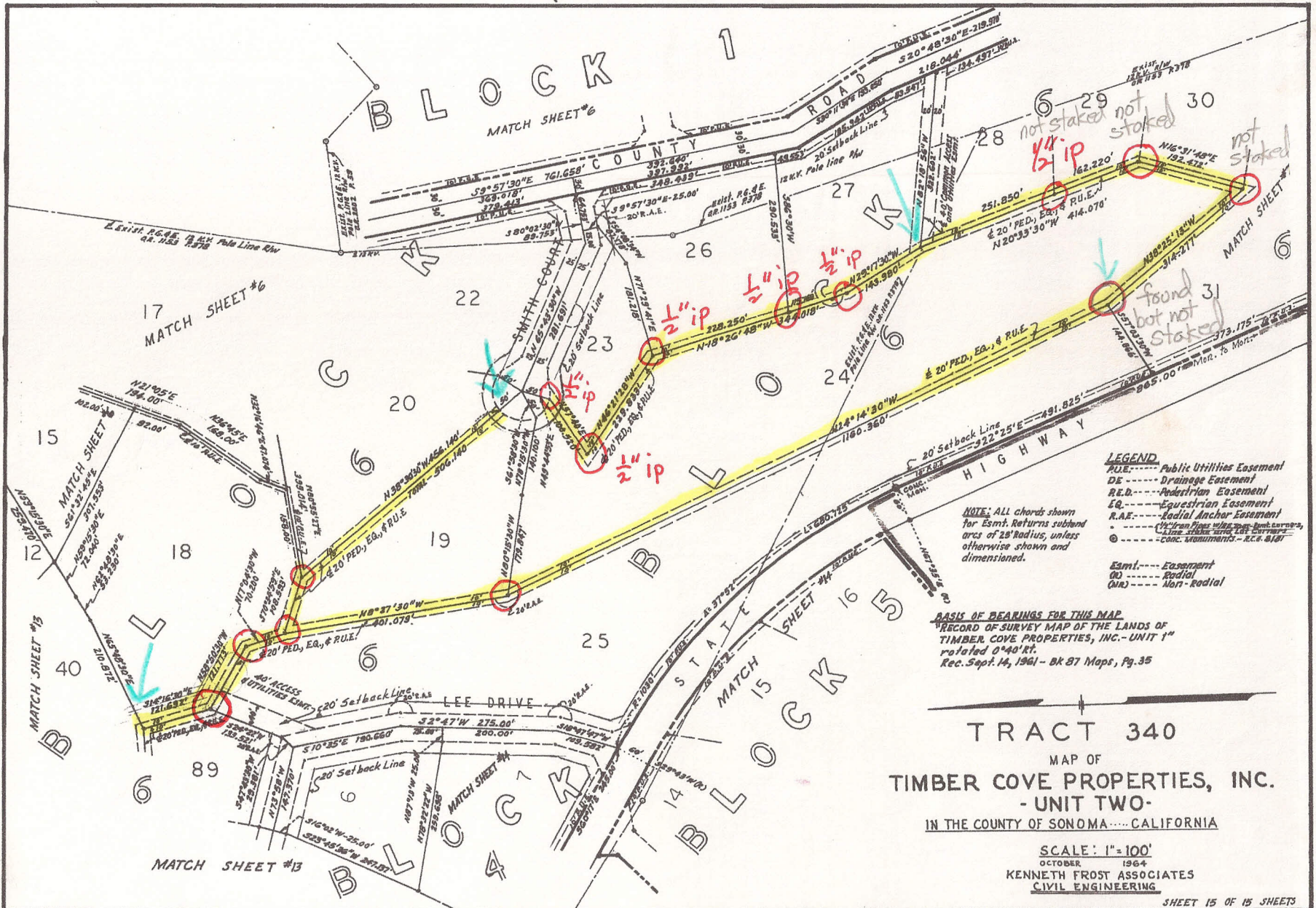
NOTE: All Chords shown for Easmt. Returns subdvd area of 25' Radius, unless otherwise shown and dimensioned.

BASIS OF BEARINGS FOR THIS MAP
 RECORD OF SURVEY MAP OF THE LANDS OF
 TIMBER COVE PROPERTIES, INC. UNIT 1
 rotated 0°40' Right
 Rec. Sept. 14, 1961 - Bl. 87 Maps - Pg. 35

TRACT 340
 MAP OF
TIMBER COVE PROPERTIES, INC.
 - UNIT TWO -
 IN THE COUNTY OF SONOMA - CALIFORNIA

SCALE: 1" = 100'
 OCTOBER 1964
 KENNETH FROST ASSOCIATES
 CIVIL ENGINEERING

Wing
 Chan
 2484



LEGEND
 P.U.E. --- Public Utilities Easement
 D.E. --- Drainage Easement
 P.E.B. --- Pedestrian Easement
 E.Q. --- Equestrian Easement
 R.A.E. --- Radial Anchor Easement
 (---) --- (---) Iron Pipe with cap both ends
 (---) --- conc. monuments - E.C. 8187

Esmt. --- Easement
 (R) --- Radial
 (NR) --- Non-radial

NOTE: All chords shown for Esmt. Returns subdivided area of 20' Radius, unless otherwise shown and dimensioned.

BASIS OF BEARINGS FOR THIS MAP:
 RECORD OF SURVEY MAP OF THE LANDS OF
 TIMBER COVE PROPERTIES, INC. - UNIT 1"
 rotated 0°40' Rt.
 Rec. Sept. 14, 1961 - BK 87 Maps, Pg. 35

TRACT 340
 MAP OF
TIMBER COVE PROPERTIES, INC.
 - UNIT TWO -
 IN THE COUNTY OF SONOMA, CALIFORNIA

SCALE: 1" = 100'
 OCTOBER 1964
 KENNETH FROST ASSOCIATES
 CIVIL ENGINEERING

Map
 Line
 2494

103
 103

25

2464