

Timber Cove

March 2023

R
A
I
L

S
U
P
P
O
R
T
E
R
S

Trail Workday April 15

Join us for a trail work day on Saturday, April 15th. Meet at 22188 Umland Circle at 10 a.m. Bring a shovel, pick, sledge, pick bar, or loppers if you have them. Otherwise just come and help. All are invited to a potluck meal afterwards at the Howland House 22050 Timber Cove Rd.

We'll be finishing the stairs near Umland and making new improvements to other sections of the Umland Circle to Smith Court Trail.

Want to Help in another Way?

If you have another skill that you can offer to help grow our volunteer organization, please contact us. We'd love to find a place for you.

Storm Damage and Maintenance

Aside from the overarching task of restoring our six miles of trails, the recent storm downed trees on all three of our restored and partially restored trails, especially the trail to Timber Cove Creek. This type of maintenance is ongoing of course, and one of the reasons Trail Supporters was formed. It is not easy, as we all have many responsibilities and little time. Nevertheless we raise the funds to restore and maintain our trails and do much of the work ourselves. Trail Supporters is entirely in the American tradition of volunteering for the common good,

It is always best if the property owners who have trails keep them passable, but we are here to help in the case of absent owners or those in need. It is really no wonder that after so many years of neglect the trails are overgrown and blocked in many places, as Timber Cove is a forest, a wild one, and we love it. We also love the fact that some of our terrain is steep and rugged. This is Timber Cove, not Oakmont, and we wouldn't trade it.

timbercovetrails.org

Our TCHA was made responsible for the maintenance of our trails in 1965 with the inclusion of Clause VIII of the CC & Rs, and it is given the authority to levy charges for such maintenance in Clause XI, item 8, a & f. ([See highlighted TCHA CC & Rs](#))

Trail to Yesteryear

Long before Richard Clements and his wife Ninive thought of creating a subdivision here in the late 1950s, Timber Cove was known as an abandoned dog hole port and abalone divers' paradise.

Although there is no apparent evidence of it now, lumbermen settled here in the 1850s, building a chute to send the redwood logs and processed products like fence posts onto ships

like the two-masted schooner at left. The chute was located between the current site of the Timber Cove Inn and the Boat Landing. A hotel, post office, express office, store, and a few houses served their needs until our hills and canyons were stripped clean by the 1870s. There was a clear-cut of second growth in the 1950's.

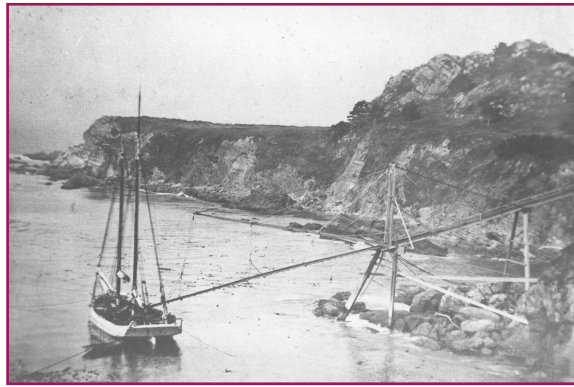
To learn more about the archaeological remains of Timber Cove's industrial past

see: [Dog Hole Port: Timber Cove](#)

Forest Management and Fire

Our forests are very young, infants in comparison to the 2,000 year-olds that once stood here, and they are our responsibility now. This redwood nursery is now threatened by forest floors that have been neglected and allowed to build up huge amounts of dead debris on about half of the lots. We have a mechanism to remedy that, a fire abatement ordinance that took 10 years to design. It should be reinstated to save our community from the fate of Paradise. Community trails are an important tool for fire abatement and were recently credited with helping to save the town of Windsor and Annadel State Park.

contact: timbercovetrails@gmail.com



Dog Hole Port at Timber Cove
(Monterey County Historical)Society



Neglected properties: 109-430-043 & -053, May 23, 2021



Recovery: Moving Forward

For seven years the vitality and constructive progress of our community was stymied by a small group that attempted to revoke the rights to our deeded trails and abolished our fire abatement program. They went to extreme lengths to impose their will, even resorting to personal harassment and property vandalism.

These actions have been discredited. Everything the group has asserted, written, published, and submitted about the trails has been rejected by the Sonoma County Superior Court and by every reputable attorney involved in the case, including former TCHA attorneys like Barbara Zimmerman who described our pedestrian easements in a [letter to the TCHA in 2004](#).

We refuse to respond in detail to the current report by Robert Leichtner for the TCHA. He is not conveying advice he received from attorneys, insurance companies, or actual documents, but is recording his opinion and misinterpretation of the trial, the ruling, and judgement. As he has been in the past, Leichtner is wrong about all but two key points.

Leichtner finally states accurately that the TCHA has no authority to revoke the trails, and that the easements are owned equally by all property owners, something Trail Supporters [published in 2014](#) after only a few weeks of research.

This struggle in our small community was reflected in the larger struggle in our nation to resist authoritarian attempts to subvert our democracy. As in the national struggle, the actions and vote of every Timber Cove property owner is vital. We need people who will act to protect our infrastructure and wellbeing and will abide by the law to stand for election on the TCHA and TCCWD boards.

Timber Cove Trail Supporters will continue our work with as much sensitivity as possible, but we will seek legal remedies for interference and harassment. That remedy will be easier now, as it is an enforcement of a previous judgement.

[SCV263251 Filed Judgment California Civil Code - 845](#)

Visit our website below for accurate information about our trails. Our *Home* page has past newsletters, a link to a map of our trails published by the TCHA in 2008, and notices of current events. The *Facts and Issues* page has links to the historic legal documents that underlie our trails, and recent events that affect them.

We have added a new *Archives* page to retain records of our struggles and triumphs in the last few years.